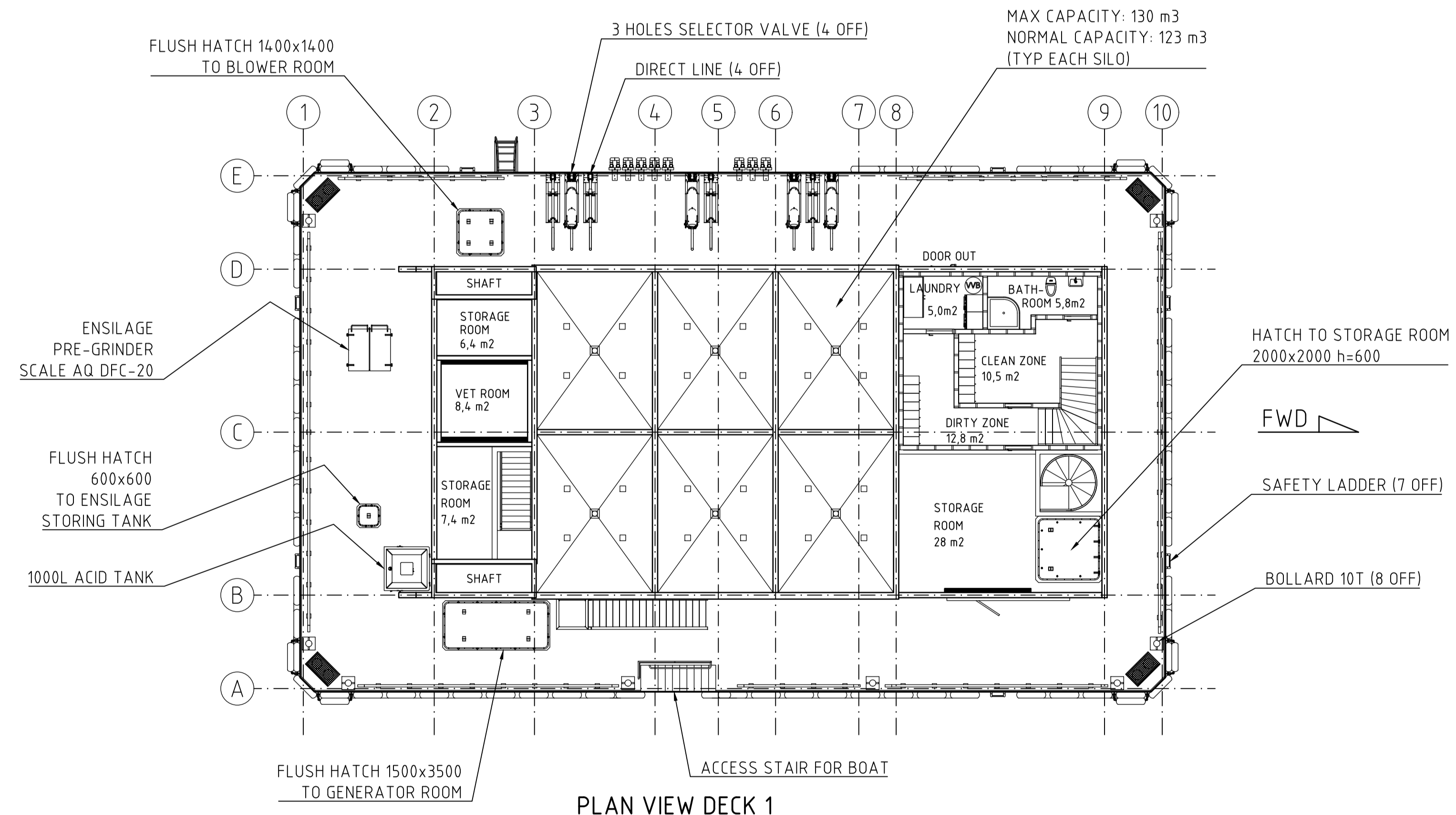
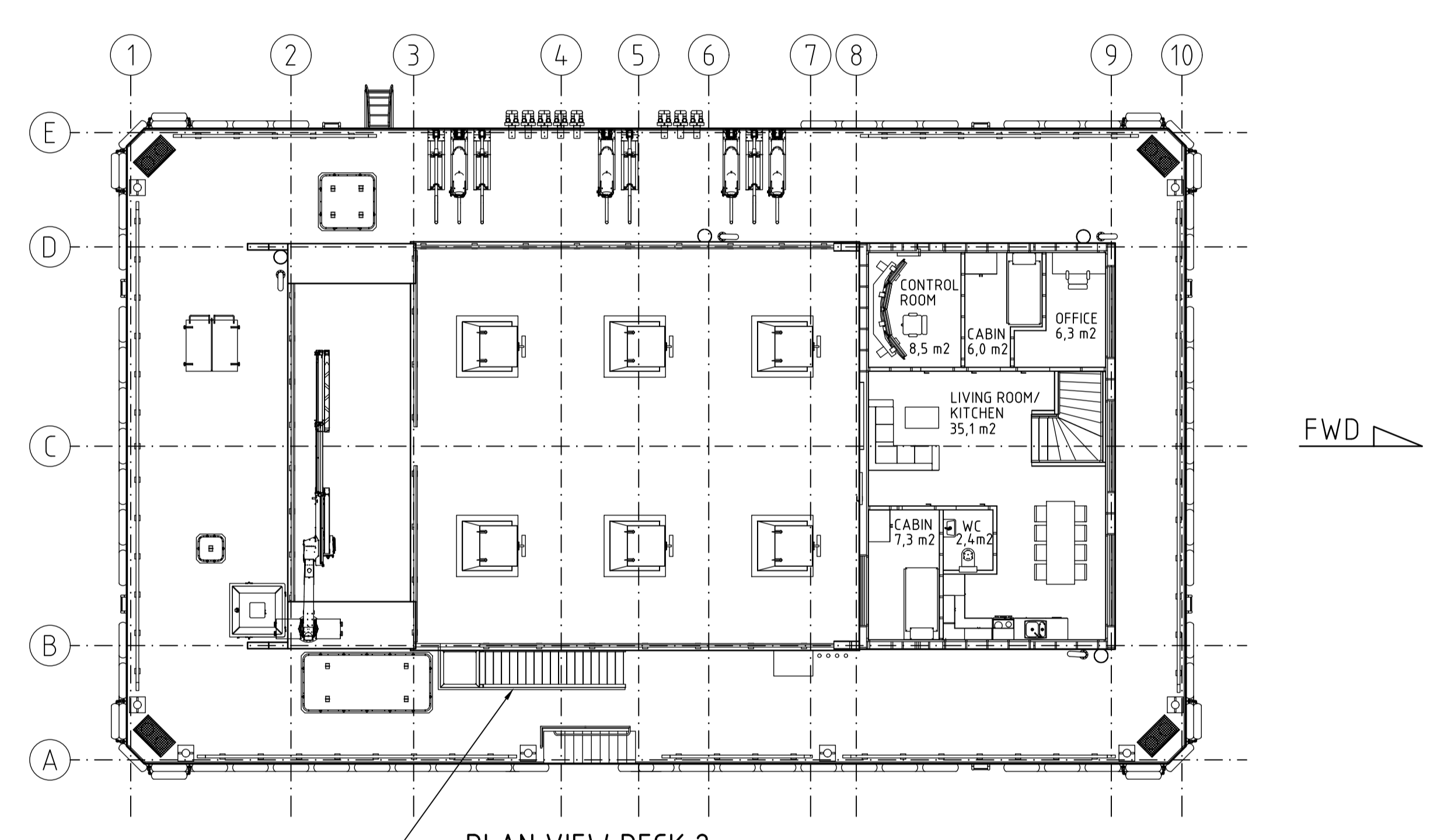
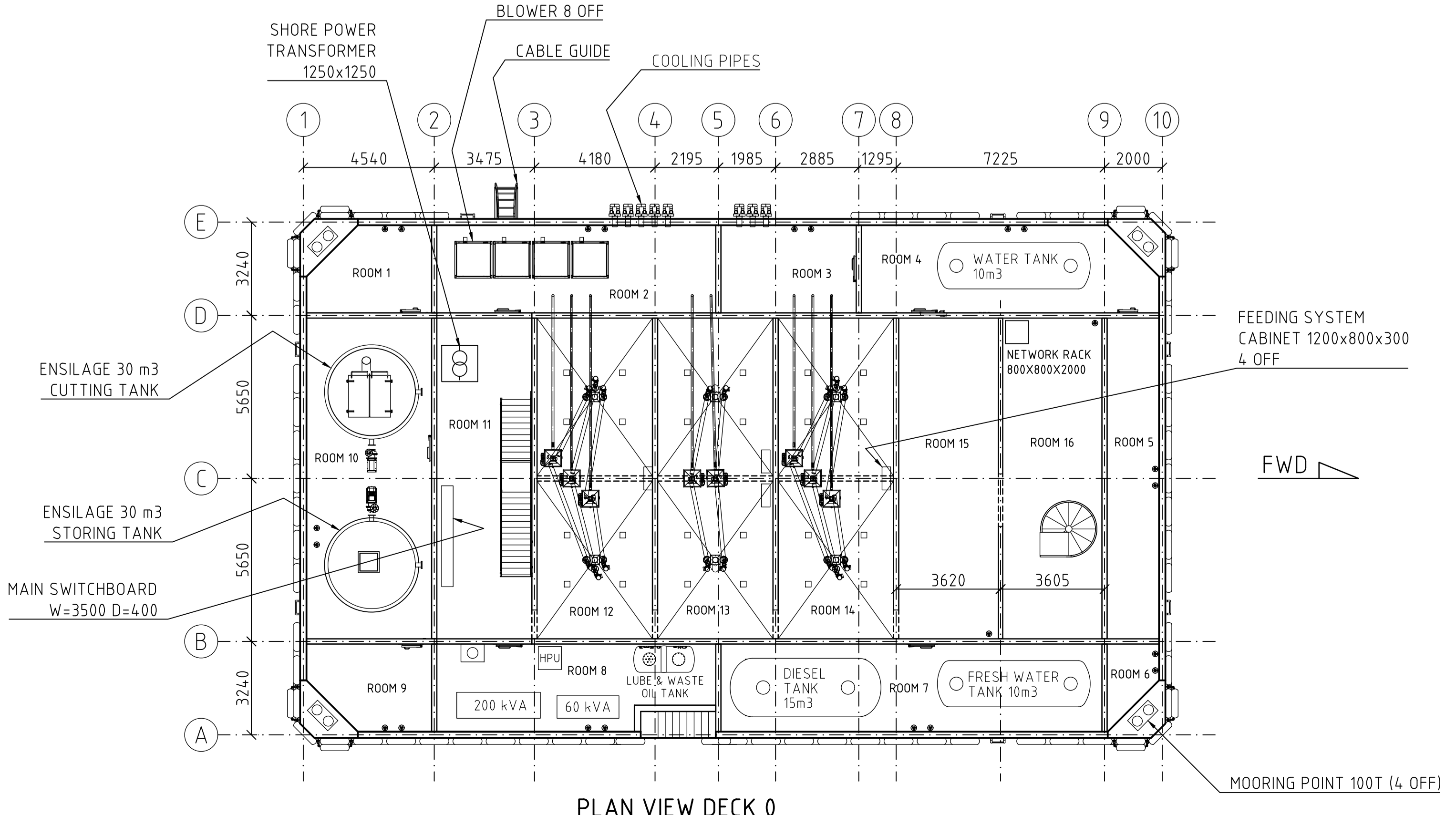


CRANE CAPACITY TABLE		
OUTREACH	RANGE (mm)	* MAX LOAD (kg)
2	7900	2750
3	10000	2050
4	12100	1580
5	14200	1180
6	16400	900

* LIFTING CAPACITY SHOWN IN HOOK MODE. USED IN WINCH MODE, THE LIFTING CAPACITY MUST BE REDUCED BY THE WEIGHT OF THE SPECIFIC WINCH.



MAIN DIMENSIONS		
LENGTH:	30	METERS
BREADTH:	18	METERS
DEPTH:	5,0	METERS
SILO CAPACITY		
SILO QUANTITY:	6	
SILO CAPACITY:	82	TON/SILO
TANK CAPACITY		
FRESH WATER TANK:	1x10	m3
TECHNICAL WATER TANK:	1x10	m3
FUEL TANK:	1x15	m3
ENSILAGE TANK:	2x30	m3
EQUIPMENT		
FEED SYSTEM w/ 8 LINES & 16 AUGERS:	1x60	kVA
GENERATOR:	1x200	kVA



ISSUED FOR INFORMATION				
Revision	Comments	JV	PIA	Designer/Approved
0				

This document is the property of Scale Aquaculture AS. This document and any authorized reproduction thereof, must not be used in any way against the interest of Scale Aquaculture AS. Any authorized reproduction, in whole or in part, must include this legend.

Designer: JV PIA
 Created date: 26/02/21 Approved date: 26/02/21 Weight (kg): 0 Size: A0 Scale: 1:125
 Description: FEED BARGE, NOVA CONCRETE 500T LG
 Description: GENERAL ARRANGEMENT
 Drawing number: NCS0010-101-001